

Relex Life Cycle Cost

Analyze the Lifetime Cost of a Product

Relex Life Cycle Cost provides user-defined cost breakdown analysis throughout the life of a product, including design, manufacturing, maintenance, and warranty.

Used to calculate the cost of a product over its lifetime, Relex Life Cycle Cost combines industry-standard or user-defined cost and work breakdown structures with a flexible equation editor to provide complete control over your life cycle cost analyses. Consider alternative designs, incorporate a range of variable types, and calculate sensitivity. Useful throughout design, development, manufacturing, and use, Relex Life Cycle Cost can meet your cost analysis needs during any phase of product life.

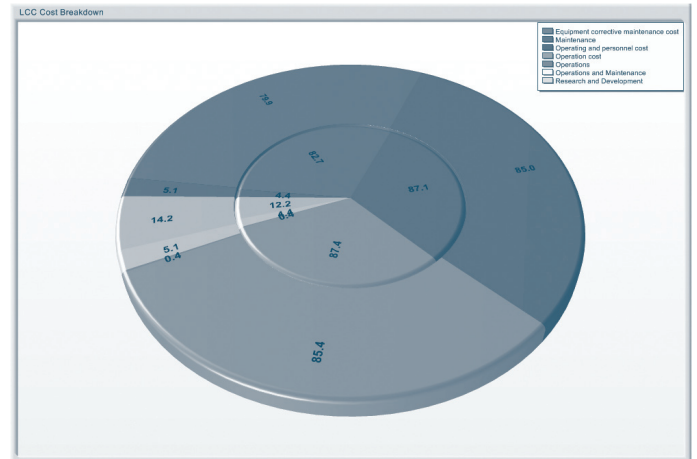
Key Benefits

Comprehensive Life Cycle Cost Analysis Tools

- Accounts for many different types of costs, including design, production, warranty, repair, and disposal
- Supports parametric, analogy, bottom-up, and direct cost analysis calculation types
- Calculated costs include total lifetime cost, sensitivity calculations, and Net Present Value (NPV) calculations
- User-defined cost equations and variables allow for customized calculations
- Include design and development costs such as system planning and concept design, preliminary system design cost
- Include manufacturing and use costs such as product costs, maintenance costs, and disposal costs

Intuitive Interface Supports Cost Calculations

- Provides a Cost Breakdown Structure (CBS) to account for any cost
- Provides templates based on industry standards for automotive purchasing, battery storage, and manufacturing equipment
- Create your own CBS to meet your company or industry needs



Relex Life Cycle Cost computes overall system costs as well as line-item costs.

Flexible Equation Definition

- A built-in equation editor assigns calculation properties to elements in the cost breakdown structure
- Select from pre-existing equations, define your own variables, or define your own equations
- Create simple or complex equations
- Define variables as changing over time, over design alternatives, or both
- Augment your equations with time, date, and common math functions
- Construct analyses for very detailed repair costs through to very high-level functions

Dynamically Link with Other Relex Modules

- Dynamically link variables in equations to calculated results from other reliability analyses
- Link with failure and repair rates from Relex Reliability Prediction
- Link with availability and downtime costs from Relex OpSim

Features

Supported Calculations

- Cost
- NPV (Net Present Value)
- Cost percentages
- NPV percentages
- Sensitivity analysis

Sample Constant Variables

- Days of operation
- Months in year
- Transportation cost
- Unit price
- Utility per day
- Warehouse cost
- Consumables
- Consumable supplies
- Electricity
- Maintenance contracts
- Salaries
- Transportation
- Transportation allowance
- Miles per year

Sample Varies by Alternative Variables

- CM (Corrective Maintenance) cost
- Inspection testing
- Labor cost
- Manufacturing cost
- Material cost
- Material handling
- MTBF (Mean Time Between Failures)
- Operating cost
- Packaging
- PM (Preventive Maintenance) cost
- PM (Preventive Maintenance) interval
- Production per year
- Quality control
- Insurance per year
- Miles between tune-ups
- Miles per gallon
- Purchase cost
- Salvage value

Sample Varies over Time Interval Variables

- Batteries
- Battery replacement
- Facilities
- Financing
- Load interface
- Monitors

- Power conversion
- Project management
- Start up
- Taxes
- Gas price

Sample Varies by Alternative and Time Interval Variables

- Purchase price
- Salvage value
- Cost per maintenance
- Initial cost
- Insurance cost

Sample Analysis Outputs

- Total system cost
- Cost per assembly
- Percentage costs
- Sensitivity results

Input and Output Data in a Variety of Formats

- Easily import from or export to commonly used formats like Microsoft Excel, Microsoft Access, XML, and plain text files
- Create reports in Microsoft Word, Microsoft Excel, Adobe PDF, and Rich Text Format
- User-definable, wizard-driven custom graphs and reports
- Dynamically link to other Relex analyses, such as OpSim and Reliability Prediction

Available Enterprise-Class Features

- Enterprise Edition supports a multi-user environment with login permissions, security features, administrator control, and audit trail functionality
- Database integration at enterprise level supports Microsoft SQL Server 2008, Oracle, Microsoft SQL Server Express, and Microsoft Jet Engine (Access compatible)
- User-specific login page provides system-wide announcements

For More Information

For more information on Relex Life Cycle Costs, please visit: www.relex.com/products/lcc.asp

Copyright © 2009, Parametric Technology Corporation (PTC). All rights reserved. Information described herein is furnished for informational use only, is subject to change without notice, and should not be construed as a guarantee, commitment, condition, or offer by PTC. PTC, the PTC logotype, Relex, and all PTC product names and logos are trademarks or registered trademarks of PTC and/or its subsidiaries in the United States and in other countries. All other product or company names are the property of their respective owners.